



*"Delivering Stainless Solutions"*

Manufacturer - Stock Holder - Exporter

# Stainless Steel

Seamless and Welded - Pipe - Tube - Fitting  
Flange, Washer, Decorative - Tubes - Sheets

**Sterling inc** was established in the year 1975, with a sole motto to provide high-quality products to the market. the owner of the organization is a qualified Industrial Engineer who is well aware of the market requisites. His work experience as a whole time director handling the day to day functions of a company supplying plates, pipe and pipe fitting has assisted us in gaining specialization in this domain. The huge success witnessed by us has further motivated us to outperform ourselves and deliver even better results. Our efforts towards achieving and maintaining organizational excellence are supported by our team of highly talented and dedicated professionals.

## **Stainless Quality and Eternal Reputation**

**Sterling inc** was established in the year 1975, with a sole motto to provide high-quality products to the market. the owner of the organization is a qualified Industrial Engineer who is well aware of the market requisites. His work experience as a whole time director handling the day to day functions of a company supplying Plates, Round Bars, and Square Bars at Mumbai has assisted us in gaining specialization in this domain. He was also engaged in the importing of SS Plates & Strips. With his industrious efforts, we are able to stand among the reputed providers of Stainless Steel Products to the consumers based in India. The huge success witnessed by us has further motivated us to outperform ourselves and deliver even better results. Our efforts towards achieving and maintaining organizational excellence are supported by our team of highly talented and dedicated professionals. Today, we have become widely known and acknowledged as a conglomerate of companies dealing in a diverse range of Sheets/Plates, Billets, Ingots, Circle etc.

## **Offering Value Through A Wide Range Of Products**



### **Welded Pipe and Tube – Stainless Steel - Austenitic, Duplex, Super Duplex**

- Outer dia size : 8 mm ~ 508 mm
- Thickness : 0.50 mm ~ 30 mm
- Length : Up to 12 Meter, Regular production order lengths are 6.0 / 6.1 Meter
- Specification : ASTM A 312, A778, A269, A249, A554, A358 Cl-1, A358 Cl-3
- Type : As Welded, EFW, ERW
- Shape : Round, Square (Structural)
- Pipe End : Plain, Bevelend
- Grades : 201, 202, 304, 304L, 316L, 310, 321, 316Ti, 347, 904L, UNS s31803



### **Seamless Pipe and Tube – Stainless Steel - Austenitic, Duplex, Super Duplex**

- Outer diasize : 6.35 mm ~ 323.85 mm
- Thickness : 0.50 mm ~ 12.7 mm
- Length : Up to 18 Meter
- Specification : ASTM A 312, A213, A249, A269, EN 10216-5, A789
- Type : Annealed and pickled Line Pipe, U Tube, Boiler Tube, Heat Exchanger Tubes, Bright Annealed Hydraulic and Instrumentation Tube
- Pipe End : Plain, Bevelend
- Grades : 304, 304L, 316L, 316/316L, 310, 321, 310s, 316Ti, 347, 904L, UNS s32205, UNS s32750
- ★ *Special specification and grades are also available on requirement.*





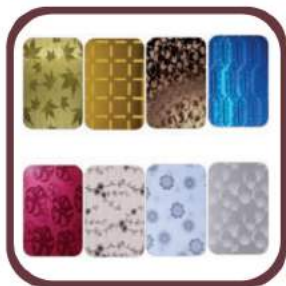
### Pipe Fitting - Stainless Steel

- Size : 1/8"NB ~ 48"NB ( Seamless, 100% X-Ray Welded, Fabricated)
- Thickness : Sch 5 to XXS
- Type : Seamless, 100% X-Ray Welded, Fabricated
- Grades : 304, 316L
- Types : Elbow, Tee, Nipple, Bend, Pipe Cap, Crosses, Stub End, Sanitary Fitting



### Flange - Stainless Steel

- Size : 1/2" (15NB) ~ 48"NB (1200NB)
- Specification : ASTM A182, A240 / ASME SA182, SA 240
- Standard : ANSI Flange, ASME Flange, BS Flange, DIN Flange, EN Flange, etc
- Dimensions : ANSI/ASME B16.5, B 16.47 Series A & B, B16.48, BS4504, BS10, EN-1092, DIN
- Pressure / Class : 150#, 300#, 600#, 900#, 1500#, 2500#, PN6, PN10, PN16, PN25, PN40, PN64 etc
- Type : Weldneck, Slip On, Socketweld, Lap Joint, Screw weld (Threaded), Blind, Tongue & Groove, Ring Joint
- Grades : 304, 316L



### Decorative Sheets – Stainless Steel

- Thickness : 0.40 mm ~ 3 mm
- Size : 4 feet x 8 feet or Customised
- Type : Mirror, Color, Pattern, Tiles, Etching, Chequered, Embossed, Hairline, Textured, 3D-Art
- Finish : Polish, No. 4 Mat, 6k, 8k Mirror Scotch Brite, Bright annealed with P.E. film
- Grades : 201, 304, 316
- Application : Decoration - Interior & Exterior, Furniture, Elevators, Pillar, Door, Cabin, Signage



### Decorative Tubes – Stainless Steel

- Outer Dia size : 8 mm ~ 127 mm
- Thickness : 0.30 mm ~ 3 mm
- Length : 6.0 and 6.1 Meter
- Specification : ASTM A 554, A269, A249, A270
- Finish : Satin and Mirror Polish finish (600 grit, 400 grit, 280 grit), Perforated, Color Tube
- Shape : Round, Square, Rectangular, Customized shaped ( U, Slot, Oval, Embossed, Handrail Oval)
- Grades : 201, 304, 316L
- Application : Decoration, Railing, Curtain Rod, Furniture



### Washer – Stainless Steel

- Size : M-3 to M-56
- Outer Diasize : 3 mm ~ 200mm
- Inner Diasize : 2 mm ~ 104 mm
- Thickness : 0.30 mm ~ 10 mm
- Standard : DIN 125, 126, 9021, 433, 436, 440R, 440V, 7349, 7989, 1440, 1052, 988 BS 4320  
FORM B and C, 3410 T3, AN960 C, NF-E25 514, 255 14, Is2016
- Shape : Plain, Round, Shim, Square, Rectangular, Lock, Wave, Machined, Disc and Customized shaped
- Grades : 201, 304, 316L
- ★ Special specification, Shape and grades are also available on requirement.

## Application Industries



### Oil and Gas Industry

- On-Shore and Off Shore installations
- Vessels, Tankers
- Oil Refining
- Chemical Processing
- Petrochemical Processing
- Risers / Manifolds, Platforms
- Fire Fighting Piping
- Furnace Roller / Muffle Furnace

### Power Generation, Transportation

- Thermal and Nuclear Power Plants
- Renewal Energy Solution
- Automotive & Rail
- Marine & Sub Marine
- Safety Systems
- Fuel & CNG Line, Signal Transmission Lines



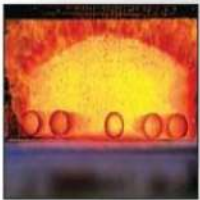
### Water and other Industries

- Desalination Plants
- Water Treatment Plants
- Medical & Pharmaceuticals
- Pulp & Paper
- Food and Dairy Processing
- Alimentary

### Decoration, Furniture

- Interior & Exterior
- Elevators & Escalators
- Hand Rail, Sanitary Wares
- Display shelf
- Hardware, Furniture
- Machinery Equipment

## Process, Testing & Inspection



At **Sterling Inc** Every qualified product passed through standard testing procedure as per specification and customer's requirement (In - house and Outsource testing facilities), we are accepting Client's own QC Inspection personal and international approved inspection agencies also:-



Customized Solution provider for Tubular and decorative products

Ground Floor, Shop No 09, Empire Square, GIDC Road, Vapi, Valsad, Gujarat, 396195  
 Tel : 0260 - 2423006 Mobile No:+91 7600843006 WebSite: <https://www.sterlinginc.in>  
 Email Id: [info@sterlinginc.in](mailto:info@sterlinginc.in) | [sales@sterlinginc.in](mailto:sales@sterlinginc.in)

Disclaimer : All the Logos and trademarks are proprietary of their respective owners